

Know how matters stand!

"ACSAnalyst for SPC" is software for comprehensive evaluation of machine logs from Rattunde production systems. It enables optimal control and monitoring of production orders and tools.

Does "ACSAnalyst for SPC" just provide statistical evaluation? Is it like other statistical tools: capable of anything, useful for some things, but responsible for nothing?

To begin with, our production systems continuously collect great quantities of important information on their current condition and the work performed. But this raw information alone is of little help.

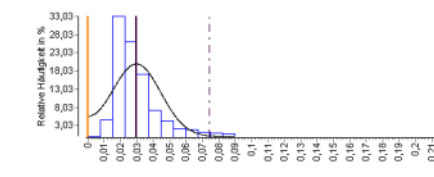
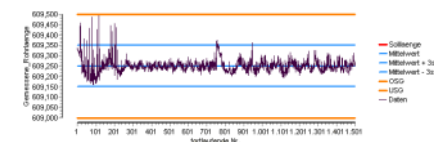
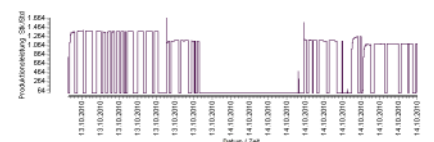
However, if these machine logs are sent to a computer and evaluated properly, one can have a convenient method for statistical control of processing orders, determine the service life of saw blades, tracking orders and dimension changes.

The evaluation offers all you need. The software has it all ready to determine the manufacturing efficiency for a given period and evaluate measured part lengths, tools, order statistics, dimension and tool changes or information on circular and axial runout.

Various filters, such as for date and time information, the accuracy of optical resolution or



Everything at a glance: the well-organized startup screen with all function options.



Each evaluation is displayed in useful charts and tables. In this example (from top to bottom) there is information on production, length measurement and circular runout.

the desired tolerance of the evaluation, enable the information to be prepared exactly as it is needed, then output afterward in useful charts or tables. These can be printed or exported in various file formats.

Work with "ACSAnalyst for SPC" is made easy with a

user-friendly graphical interface using a mouse or other pointing device in the familiar manner for PC software. Typical, frequent functions – program settings, log transfer to the database and various evaluations - are collected in a quick launch bar and can be accessed with just a click.

"ACSAnalyst for SPC" offers statistical evaluation in the best sense: capable of many things, highly useful in production and intelligent support for responsible decisions by the user.

Hardware requirements

Operating systems:
Windows 2000 / XP / 7

RAM required:
2 GB

Free hard disk space for installation (application and database):
10 GB

Monitor resolution:
at least 1024 x 786,
1280 x 1024 recommended